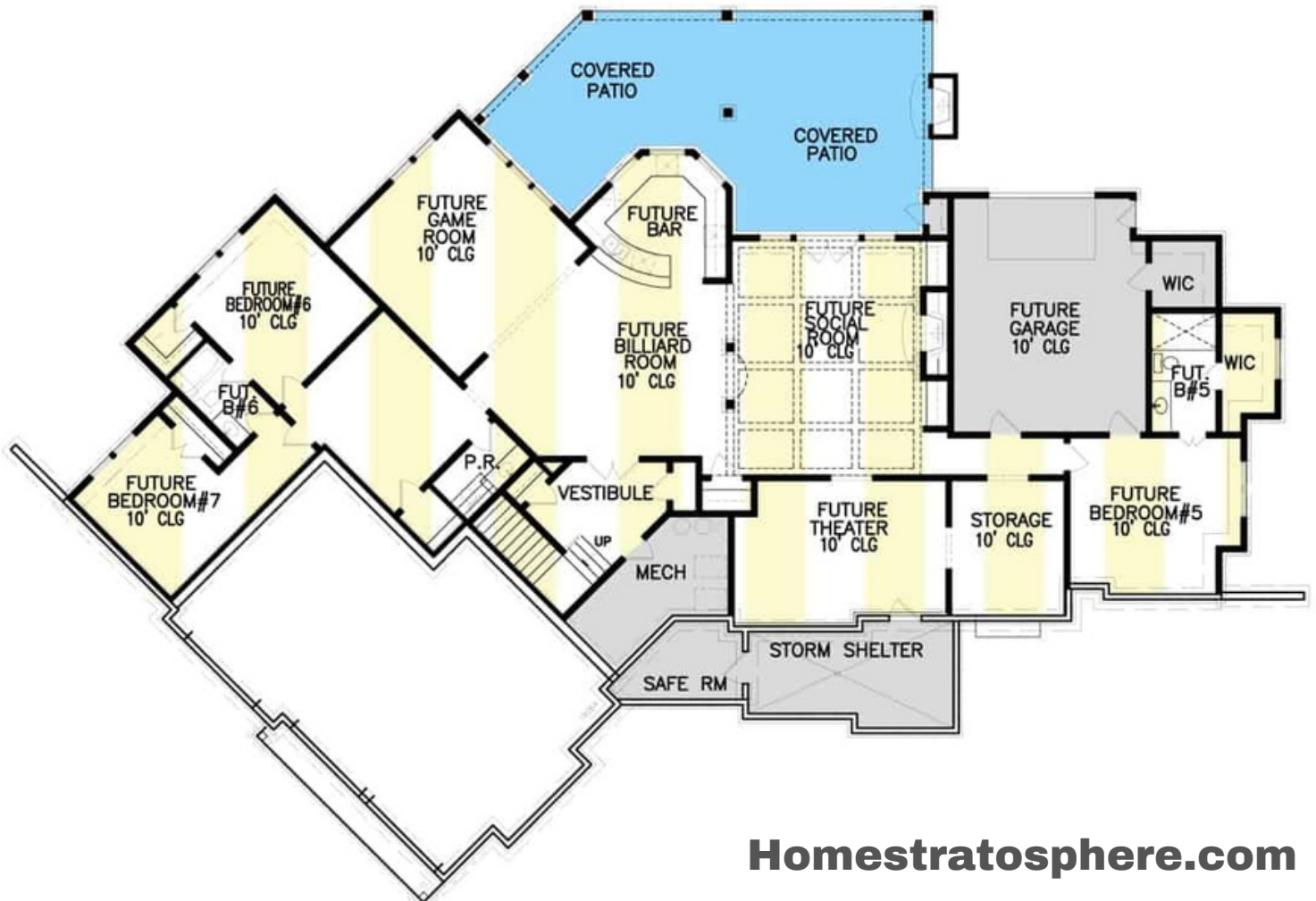
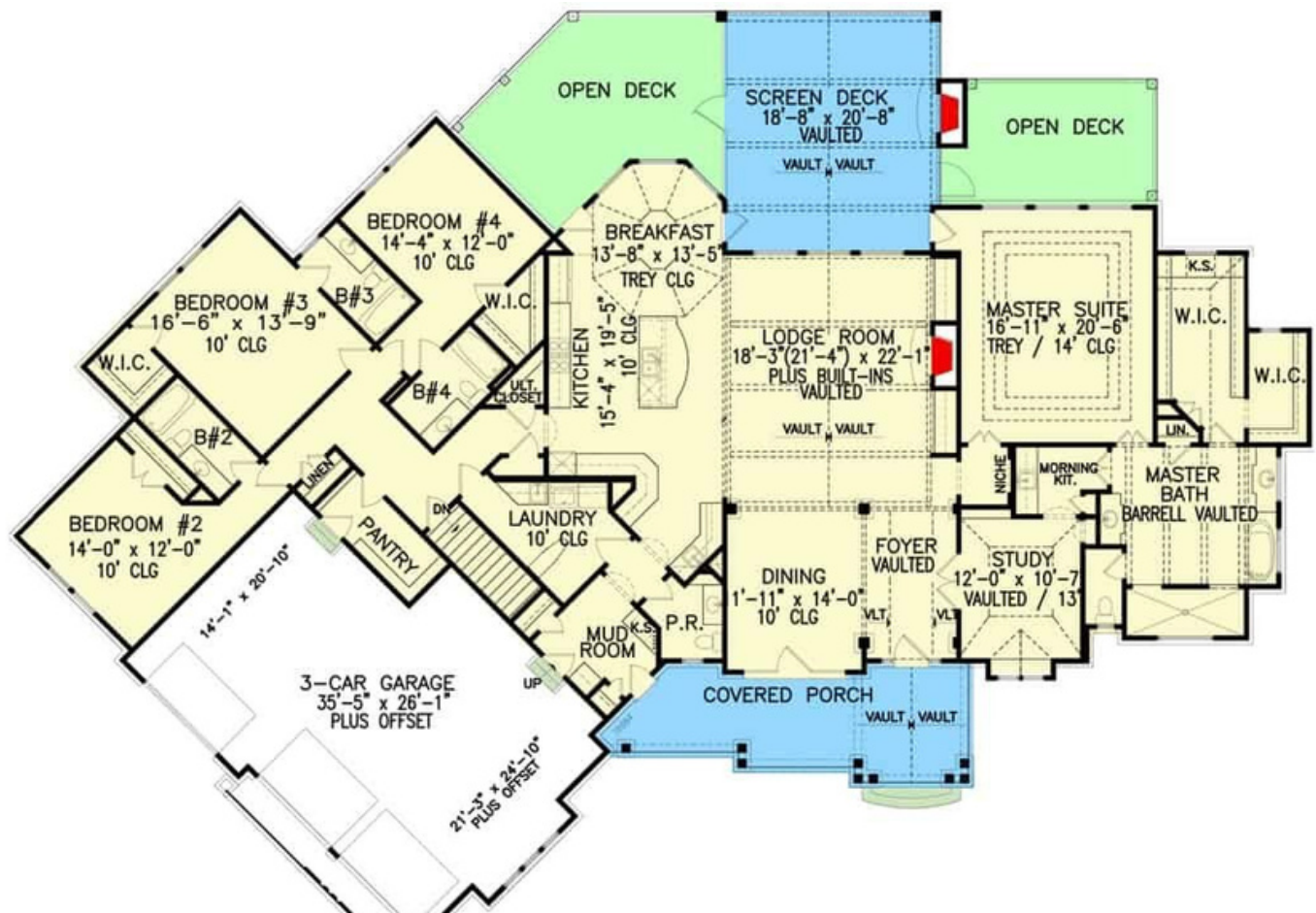


HOUSE PLAN

7-BEDROOM

CRAFTSMAN







Square Footage Breakdown

Total Heated Area:	3,773 sq. ft.
1st Floor:	3,773 sq. ft.
Optional Lower Level:	3,709 sq. ft.

Beds/Baths

Bedrooms:	4, 5, 6, or 7
Full Bathrooms:	4, 5, or 6
Half Bathrooms:	1 or 2



Dimensions

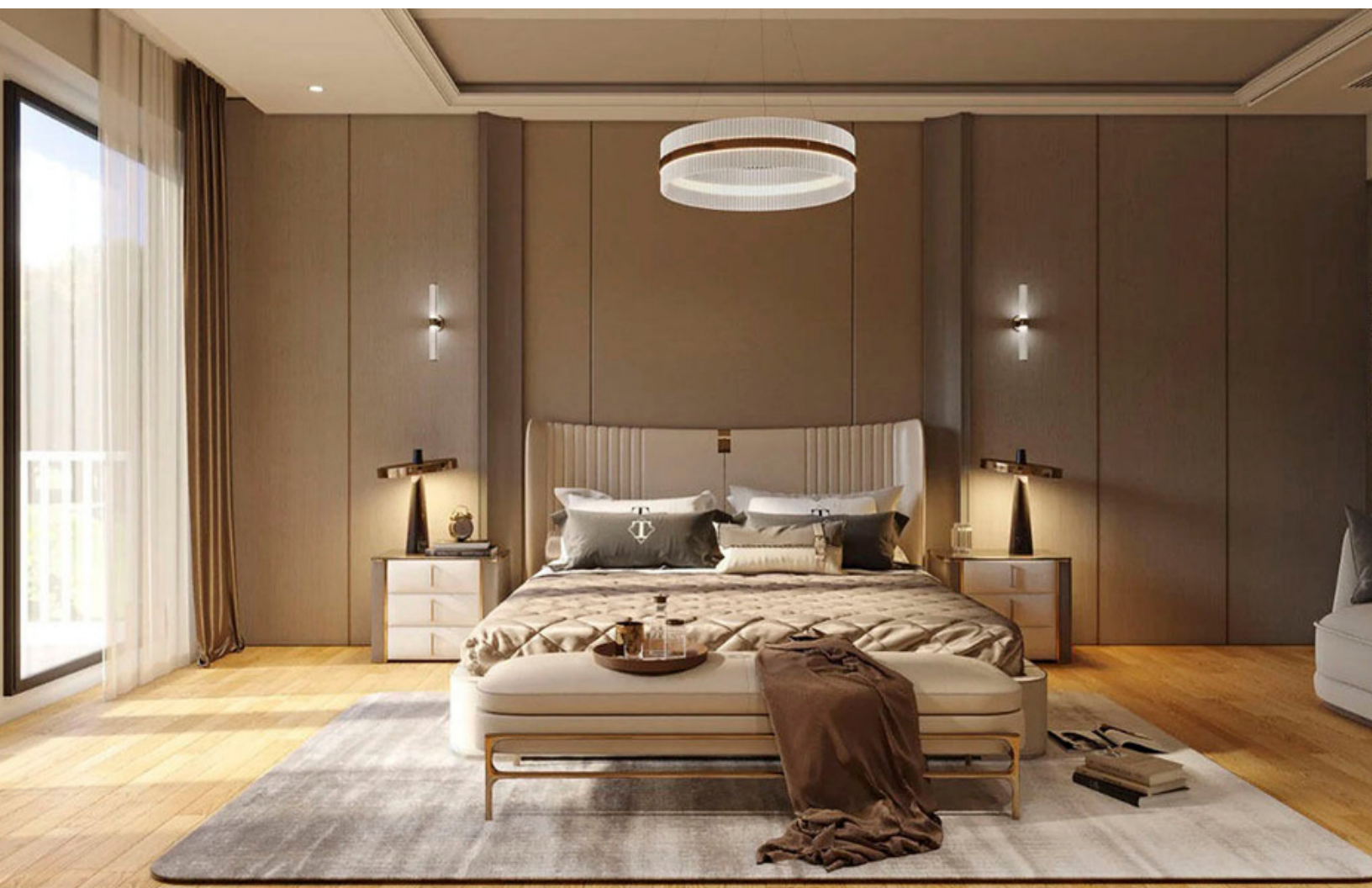
Width:	114' 10"
Depth:	84' 0"
Max Ridge Height:	28' 6"

Garage

Type:	Drive Under, Attached
Area:	858 sq. ft.
Count:	3 or 4 cars
Entry Location:	Rear, Side









BUY THIS PLAN

RETURN TO POST